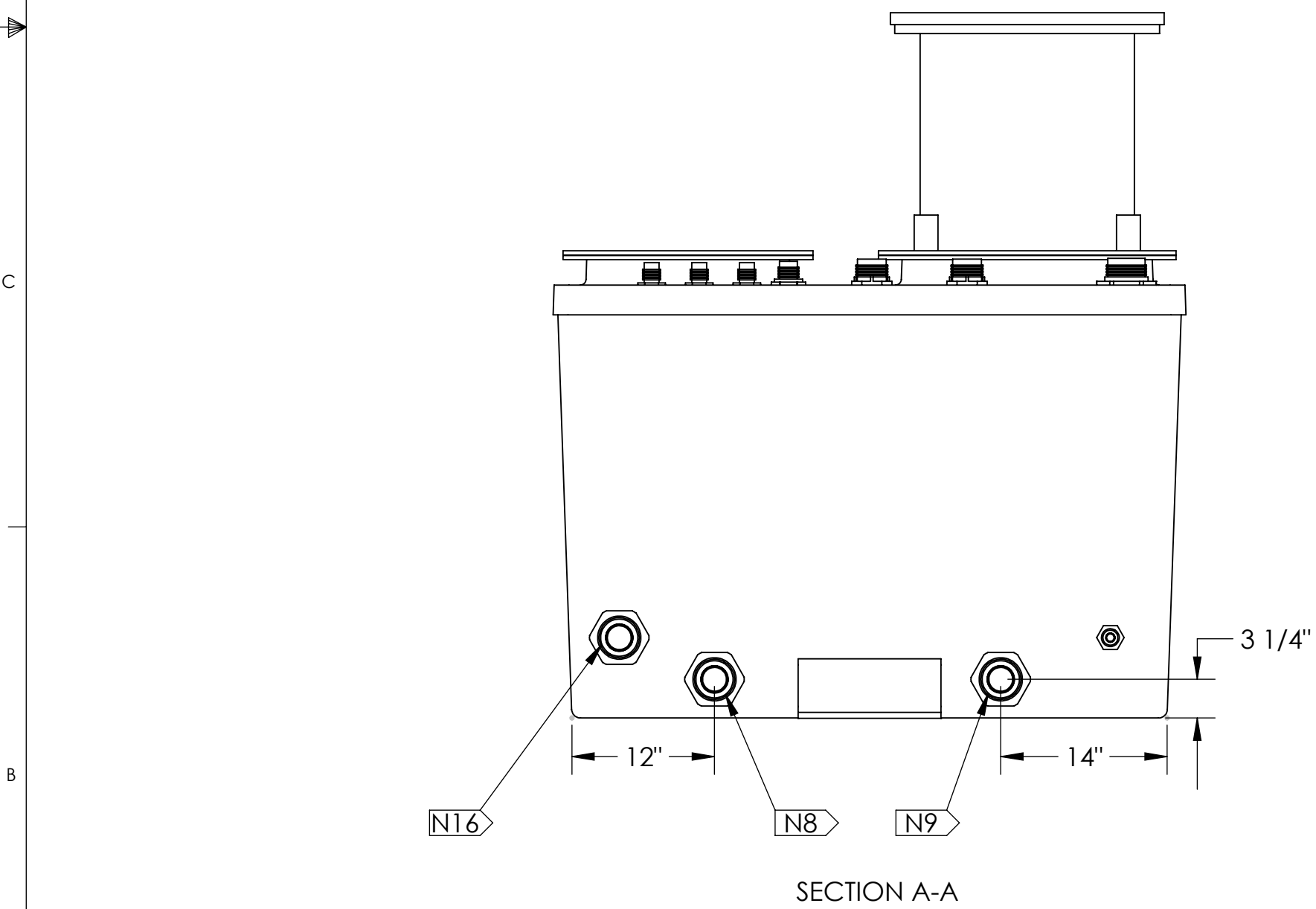
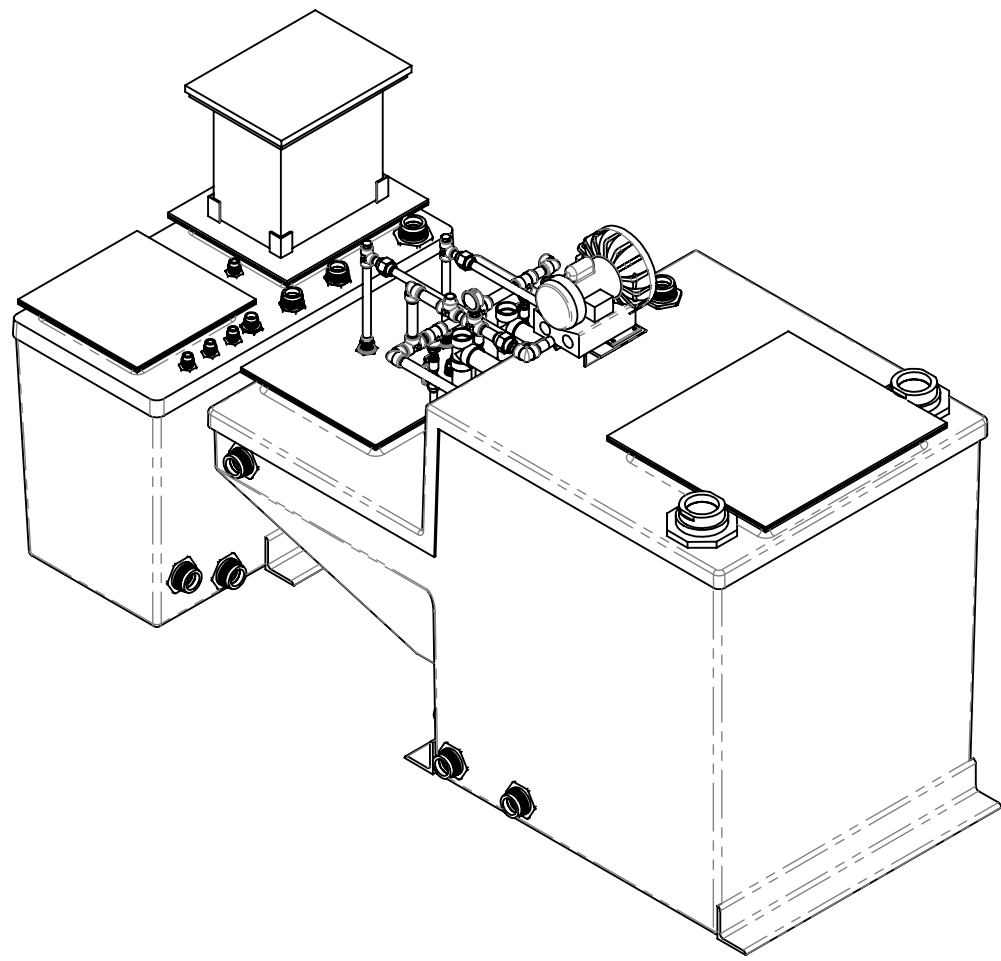
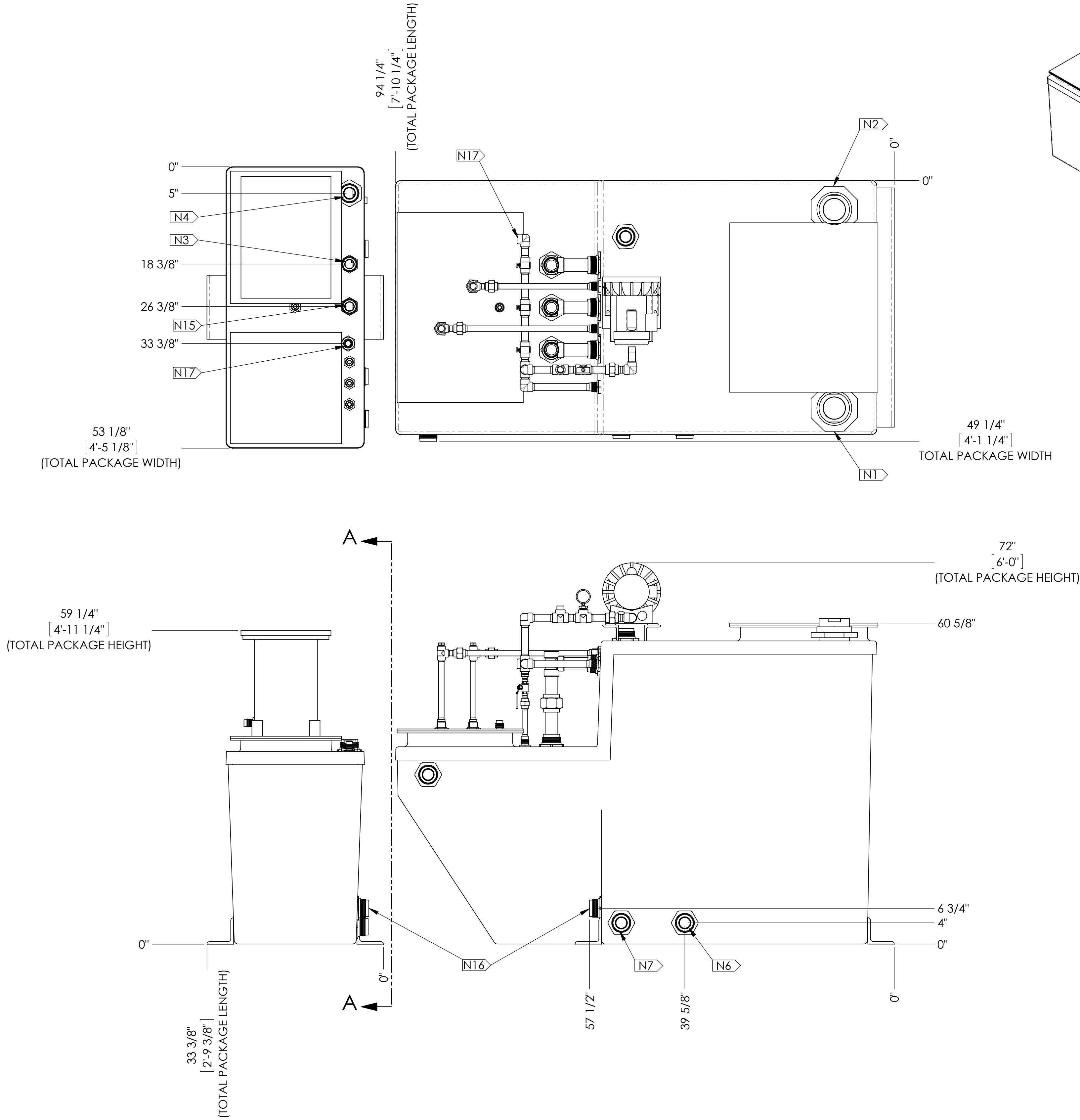


CONNECTION POINTS	
MARK	DESCRIPTION
N1	BLACKWATER INLET - 4" 150# FNPT
N2	AERATION CHAMBER VENT - 3" 150# FNPT
N3	CHLORINATION CHAMBER VENT - 1 1/2" 150# FNPT
N4	TREATED LIQUIDS PUMP DISCHARGE - 2" 150# FNPT
N6	AERATION CHAMBER DRAIN - 2" 150# FNPT
N7	CLARIFICATION CHAMBER DRAIN - 2" 150# FNPT
N8	MEDIA CHAMBER DRAIN - 2" 150# FNPT
N9	CHLORINATION CHAMBER DRAIN - 2" 150# FNPT
N15	MEDIA CHAMBER VENT - 1 1/2" 150# FNPT
N16	AERATION CHAMBER/ MEDIA CHAMBER CROSSOVER - 2" 150# FNPT
N17	MEDIA CHAMBER AIR AGRITATION CLEANOUT - 1" 150# FNPT



REVISIONS	DESCRIPTION
A	-
Rev	ECX BY: DATE



PROPRIETARY AND CONFIDENTIAL

THE INFORMATION CONTAINED HEREON SHALL BE CONSIDERED THE SOLE PROPERTY OF REDFOX. AND THE RECIPIENT THEREOF AGREES NOT TO DISCLOSE SAID INFORMATION TO PARTIES OUTSIDE THE RECIPIENT'S ORGANIZATION AND NOT TO USE, MODIFY, CHANGE OR DUPLICATE SAID INFORMATION FOR ANY PURPOSE EXCEPT AS SPECIFIED IN REDFOX WITHOUT THE WRITTEN PERMISSION OF REDFOX. COPYRIGHT 2014®.

UNLESS OTHERWISE SPECIFIED:

DIMENSIONS ARE IN INCHES(mm)

TOLERANCES:

X ±.1

XX ±.03

XXX ±.005

FRACTIONAL: ±1/16"

ANGULAR: ±1/2°

FINISH: 125 µin

FIRST RELEASE INFORMATION

DRAWN BY:	TLM	08/11/2014
CHECKED BY:	-	-
APPROVED BY:	BR	9/11/2014

SCALE: 1:12

THIRD ANGLE PROJECTION

FIRM NAME:

redFox

TITLE: GENERAL ARRANGEMENT, RF 500

SIZE	PART NO.	REV
D	RF-500-M-FG	A
WEIGHT: 1619.01 lb		SHEET 1 OF 1